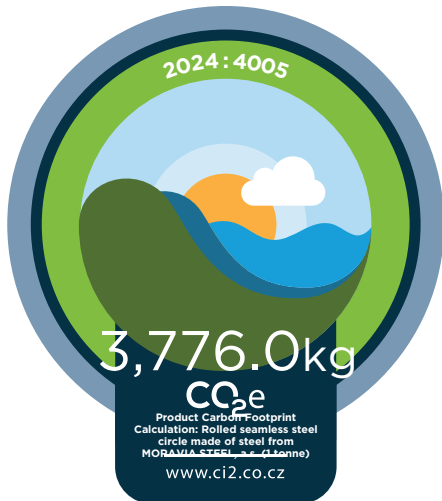




www.ci2.co.cz

2023
YEAR OF
CALCULATION



CARBON FOOTPRINT

Calculation in accordance with

ISO 14067
STANDARD

Market-based
METHOD

BOHEMIA RINGS s.r.o.

ORGANIZATION

49685643

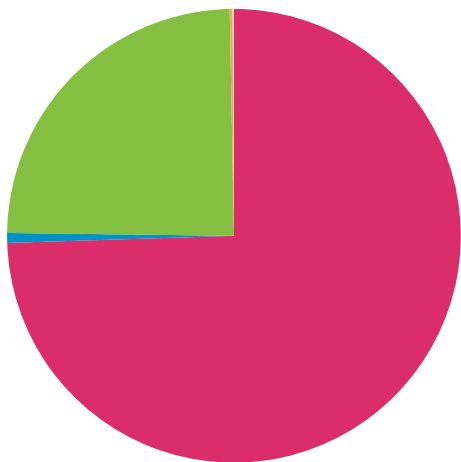
CIN

Product Carbon Footprint Calculation: Rolled seamless steel circle made of steel from MORAVIA STEEL, a.s. (1 tonne)

PRODUCT/DOMAIN

RESULTS

	Market-based emissions (kg CO ₂ e)	Part (%)
RAW MATERIAL	2,815.00	74.5 %
TRANSPORT	27.00	0.7 %
MANUFACTURING	925.00	24.5 %
WASTE	9.00	0.2 %



3,776.0 kg CO₂e

TOTAL

19. 9. 2024

DATE

in Prague

PLACE

SIGNATURE