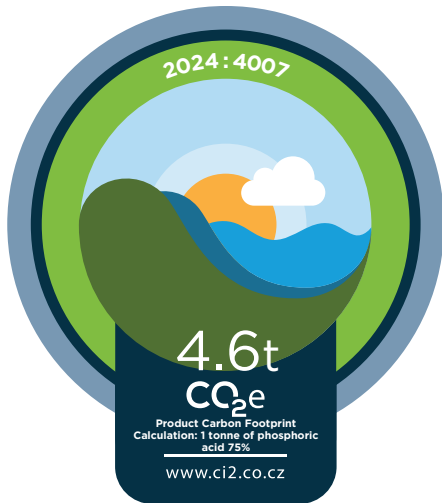




www.ci2.co.cz

2023
YEAR OF
CALCULATION



CARBON FOOTPRINT

Calculation in accordance with

ISO 14067
STANDARD

Market-based
METHOD

Fosfa, a. s.

ORGANIZATION

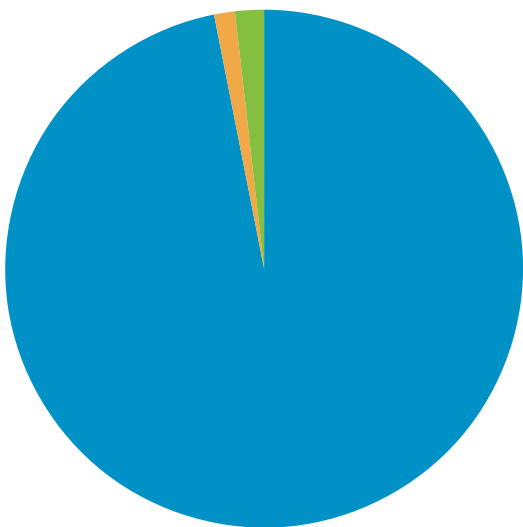
00152901
CIN

Product Carbon Footprint Calculation: 1 tonne of phosphoric acid 75%

PRODUCT/DOMAIN

RESULTS

	Market-based emissions (t CO ₂ e)	Location-based emissions (t CO ₂ e)	Part (%)
RAW MATERIAL	4.43	4.43	96.9 %
TRANSPORT	0.06	0.06	1.3 %
MANUFACTURING	0.08	0.07	1.8 %



4.6 t CO₂e
TOTAL

30. 9. 2024

DATE

in Prague

PLACE

SIGNATURE