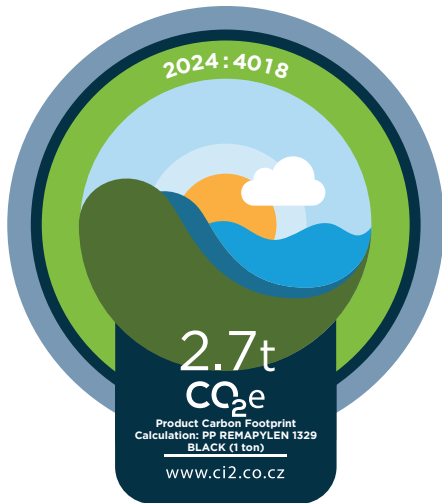




www.ci2.co.cz

2023
YEAR OF
CALCULATION



CARBON FOOTPRINT

Calculation in accordance with

ISO 14067
STANDARD

Location-based
METHOD

Remarkplast compounding a.s.

ORGANIZATION

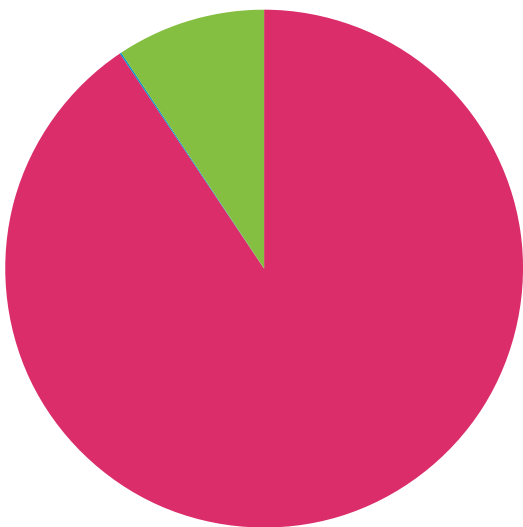
04469577
CIN

Product Carbon Footprint Calculation: PP REMAPYLEN 1329 BLACK (1 ton)

PRODUCT/DOMAIN

RESULTS

| | Market-based emissions (t CO ₂ e) | Location-based emissions (t CO ₂ e) | Part (%) |
|---------------|--|--|----------|
| RAW MATERIAL | 2.45 | 2.45 | 90.6 % |
| TRANSPORT | 0.00 | 0.00 | 0.1 % |
| MANUFACTURING | 0.25 | 0.25 | 9.3 % |



2.7 t CO₂e
TOTAL

5. 12. 2024
DATE

in Prague
PLACE

[Signature]
SIGNATURE