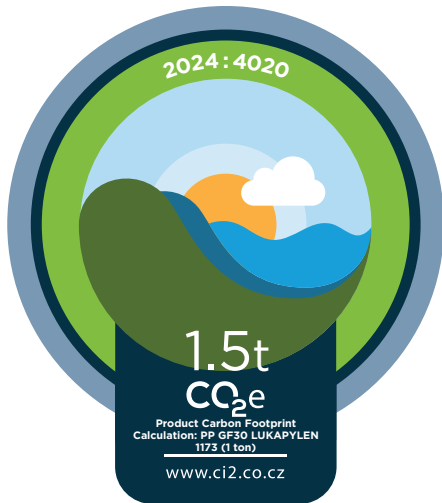




www.ci2.co.cz

2023
YEAR OF
CALCULATION



CARBON FOOTPRINT

Calculation in accordance with

ISO 14067
STANDARD

Location-based
METHOD

Remarkplast compounding a.s.

ORGANIZATION

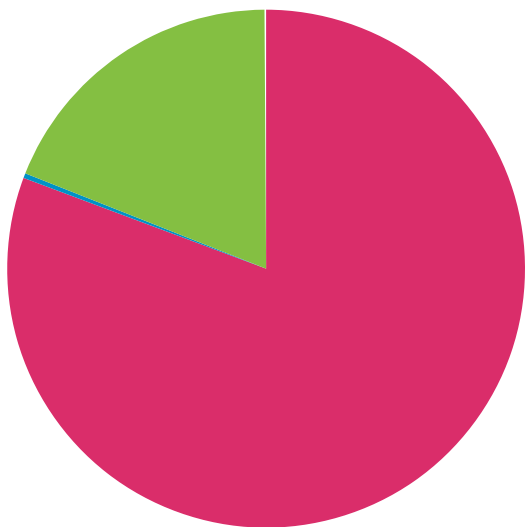
04469577
CIN

Product Carbon Footprint Calculation: PP GF30 LUKAPYLEN 1173 (1 ton)

PRODUCT/DOMAIN

RESULTS

	Market-based emissions (t CO ₂ e)	Location-based emissions (t CO ₂ e)	Part (%)
RAW MATERIAL	1.20	1.20	80.7 %
TRANSPORT	0.01	0.01	0.3 %
MANUFACTURING	0.28	0.28	18.9 %



1.5 t CO₂e
TOTAL

5. 12. 2024
DATE

in Prague
PLACE

[Signature]
SIGNATURE